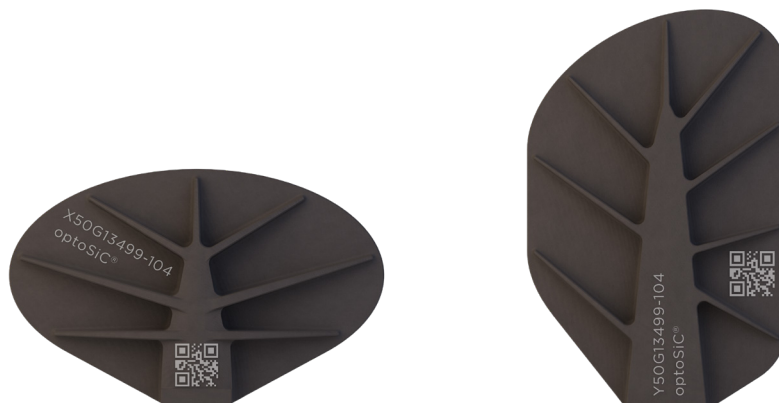


# optoSiC® XY50G

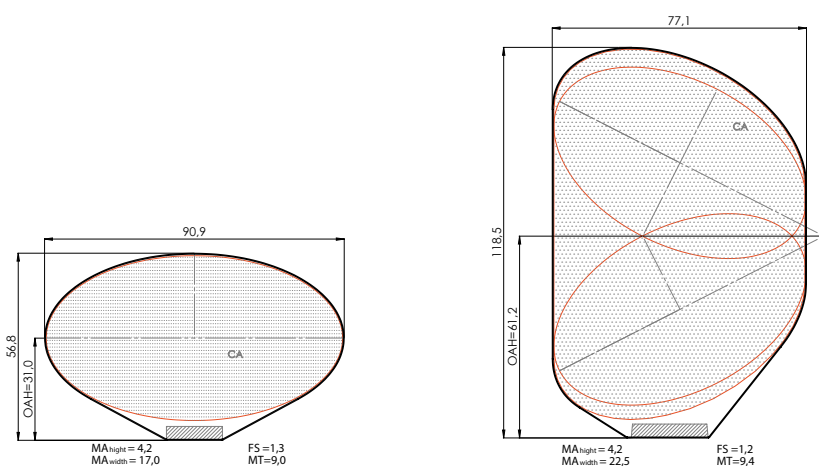
SIC OPTICS FOR HIGH-END LASER PROCESSES - INNOVATIVE LASER GALVO SCANNING MIRRORS MADE OF SILICON CARBIDE.



## MIRROR SPECS

	X50G	Y50G
Mass (g)	31,96	65,30
Moment of Inertia [ MOI ] (g*cm <sup>2</sup> )	103,2	161,0
Angle of Incidence [ AOI ] (°)	45,0	38,65
Mechanical Scan Angle (°)	± 10°	
Resonant Frequency (kHz)	6,8	3,9
Dynamic Flatness (pm/(rad/s <sup>2</sup> ))	54,0	169,0
Reflected Wavefront Error [RWE]	¼ λ and 1 λ PV @ 632,8nm interferometric within CA	
Typical Coatings Wavelengths* (nm)	532nm, 1064nm, 1080nm, Gold, Silver, CO <sub>2</sub>	
Available Mounts*	Shaft size: 10mm, 12mm	

\*Custom coatings and mounts available on request.



Technical details on request.

- Low moment of inertia
- High resonance frequency
- Customized coating service
- Mounting solutions

**optoSiC®**  
MERSEN

**MERSEN Deutschland**  
Holding GmbH & Co. KG  
Division optoSiC

Baierbrunner Straße 39  
D-81379 Munich  
Germany

**phone** +49 (0) 89 780 7239 0  
**fax** +49 (0) 89 780 7239 211  
**email** info.munich@mersen.com

**www.optosic.com**  
**www.mersen.com**