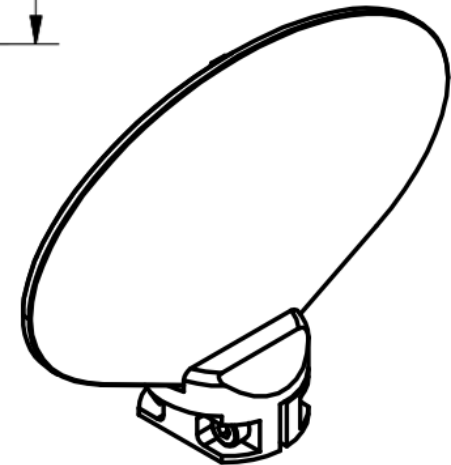
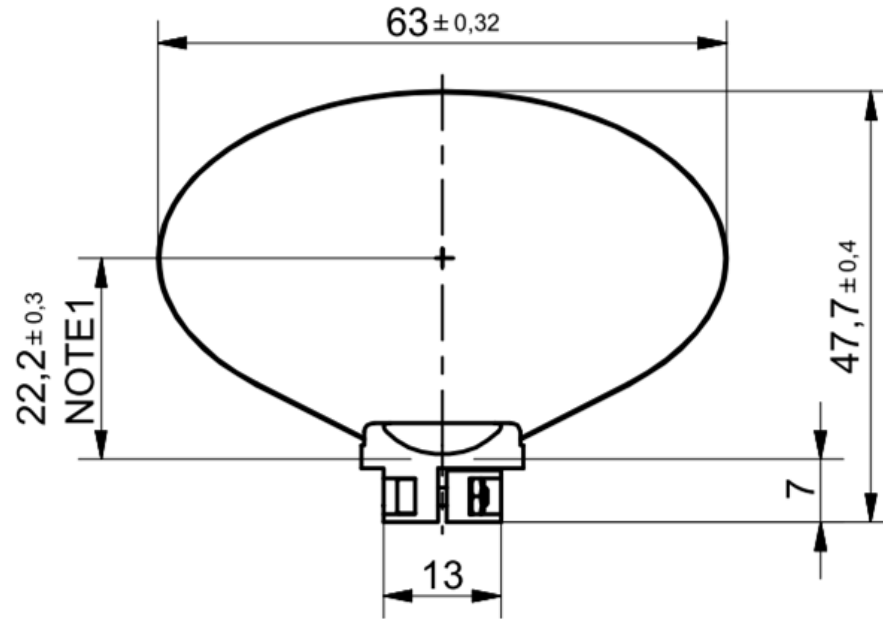
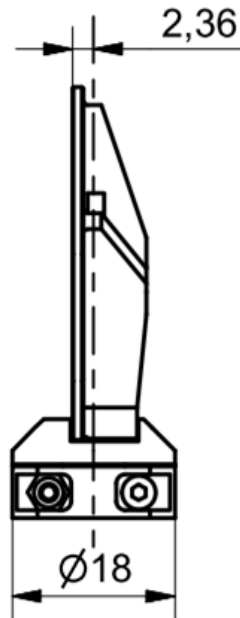


OPTOSiC® X35G with Mount for 7 mm shaft

$J = 24,0 \text{ g} \cdot \text{cm}^2$
 $M = 18,6 \text{ g}$



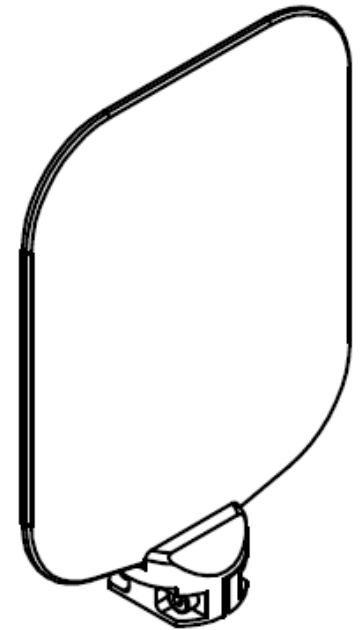
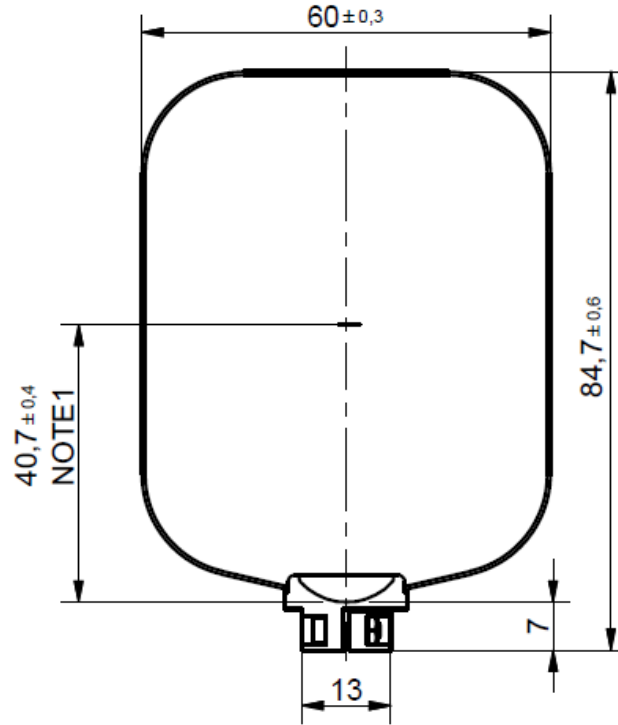
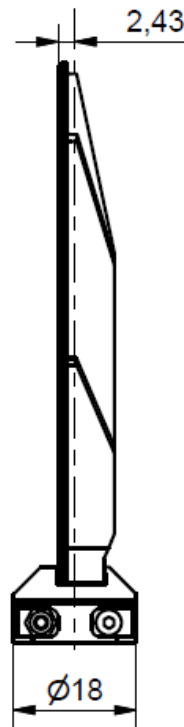
Notes:

1. Dimensions from end of the shaft to the center of the clear aperture.
2. Screw size = M2x8 mm
3. Nut size = M2
4. Hex key size = 1,5 mm
5. Recommended/Maximum screw torque: 0,5 Nm / 0,6 Nm
6. Bore for Shaft: Diameter: 7H7 ; Depth: 7,0 +/- 0,1mm

OPTOSiC® Y35G

with Mount for 7 mm shaft

$J = 56,6 \text{ g*cm}^2$
 $M = 35,9 \text{ g}$



Notes:

1. Dimensions from end of the shaft to the center of the clear aperture.
2. Screw size = M2x8 mm
3. Nut size = M2
4. Hex key size = 1,5 mm
5. Recommended/Maximum screw torque: 0,5 Nm / 0,6 Nm
6. Bore for Shaft: Diameter: 7H7 ; Depth: 7,0 +/- 0,1mm